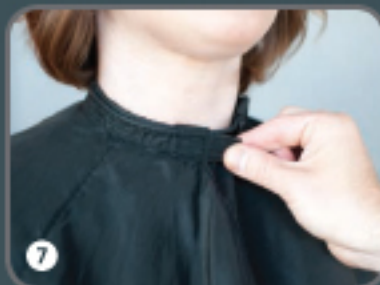
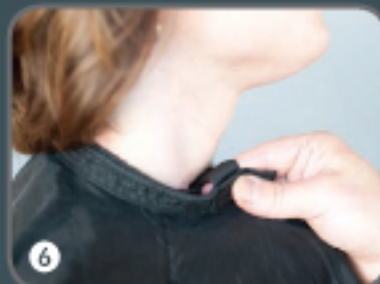
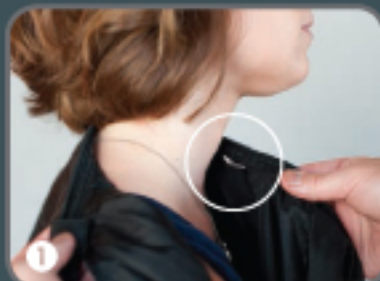
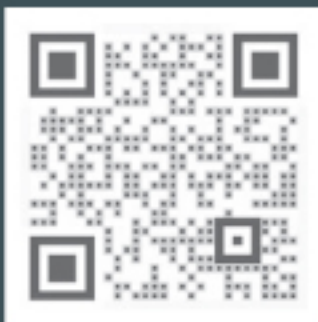


Fits Necklines Perfectly!

- 1 Locate silver reflective draping loop on neckline. This marks center front of cape. Drape client with loop at center of neck or "Adam's Apple" area.
- 2 With magnetic closure in right hand, open closure and place opposite side neckline between the magnets...
- 3 ...and release.
- 4 Cinch comfortably around clients neck by sliding the magnetic closure along capes' neckline. Adjust for client fit.
- 5 Wrap opposite side of cape's neckline around client. Notice collar fit in nape area; this look is recommended.
- 6 Open remaining magnetic closure, position one side of closure tab between the neckline of cape and release.
- 7 Gently pull fabric tab connected to closure to cinch neckline securely around client for a custom fit. To undrape your client, simply pull on this fabric tab and unwrap your client!

SCAN TO LEARN MORE!



To view a demonstration video,
visit our web site:
www.cloccacapes.com

www.facebook.com/CloccaCapes

